



MAA Bulletin

ISSUE 32
JUNE 2001



CORE PACIFIC CITY SHOPPING MALL



MAA Group Consulting Engineers
亞新工程顧問(集團)公司



MAA Bulletin

Issue 32

JUNE 2001

Moh and Associates Inc.

1st-3rd Floor, No. 63, Ren-Ai Road, Section 2
Taipei 100, Taiwan, R.O.C.
Tel: 886-2-26967888
Fax: 886-2-26968688
email: maagroup@maa.com.tw
website: www.maa.com.tw

MAA Group Consulting Engineers is a multi-disciplinary consulting firm providing professional services to both private and public clients. Today, MAA Group has offices from Taiwan to Hong Kong, Singapore, Malaysia, Thailand, U.S. West Coast, and Mainland China, creating a close network in the Asian Region.

MAA Group's goal is to establish engineering capability that will meet local needs. Along with the change in socio-economic environment over the years, business philosophy of the group has been modified. Today, professional service is no longer a product under the rule of supply and demand. The service is transformed as an asset to the client with long lasting benefits. MAA Group's principles for professional conduct is summarized in the **ASSET** motto:

- A**dvanced Technology
- project **S**afety
- client's **S**atisfaction
- E**conomical solution
- T**imely completion

3



MAA GROUP ...into the 21st Century

4



12 May 2001 HsiChih Fire and MAA Taiwan

8



TAIWAN HIGH SPEED RAIL PROJECT

10



PROJECTS APRIL 2000 – SEPTEMBER 2000

12



PROFESSIONAL ACTIVITIES

15

PERSONNEL MOVEMENTS

18

PERSONNEL PROFILES

ISO 9001 CERTIFICATION



MAA GROUP ...into the 21st Century

New Challenges – the first decade of the new millennium

In the past two years, the world has experienced enormous impacts of hi-technology and telecommunication developments on socio-economics, politics, and business systems. With greater means of information access and communication options, business methods are changing rapidly. Of particular importance are the impacts of these changing methods on traditional industries such as civil engineering.

Civil Engineering reflects the advancement of human civilization

Civil engineering is a typical traditional industry where the services provided are based on tangibles such as buildings, roads, underground structures, and other infrastructure developments. These tangibles are the foundations to economic well-being of any countries. Because of the steady nature of building methods, civil engineering has naturally evolved into a disciplinary, functional, and steady-paced business style, which fitted well with the so-called old economy – where business relationships are linear and boundaries are clear. However, today in the new economy, geographic and demographic boundaries are vanishing rapidly and business relationships are becoming more and more complex. Business cycles have shrunk, changes are constant, competition is fierce, and business attitudes of new talents are different.

These changes are challenging the traditional business styles of civil engineering industries all over the world. However, although it is important to meet these challenges and changing environments, a value of civil engineering should always be embraced – civil engineering is a reflection of the advancement of human civilization. In the past, civil engineers built buildings, roads, and railways to promote the well-being of people. And still, tomorrow, civil engineers will continue to build various infrastructures for the betterment of people.

Recognizing these issues, MAA Group Consulting Engineers held a workshop, MAA Group Development Strategy Workshop on 5th – 6th August, 2000, to bring together employees and officers in MAA Taiwan and MAA regional offices together to discuss and brainstorm ways to meet these challenges. The two-day workshop was organized with one day of small group brainstorming session, followed by a large group discussion and conclusion. The workshop has successfully over the two days achieved many of the objectives. The most important achievement is the establishment of a common language among MAA employees, bringing forth a stronger MAA team with an international mind and willingness to uphold the civil engineering value while meeting the new challenges.



Day 1 of the strategic workshop conference



MAA regional office managers at the strategic workshop conference



12 May 2001 HsiChih Fire and MAA Taiwan

The Fire Incident

On 12 May 2000, early morning at 4:00 am, a devastating fire broke out at the Oriental Technological Complex. The Oriental Technological Complex is a high-technology complex that houses many large-scale companies. These companies include investment companies, hi-technology companies, software companies, engineering related companies, and consumer product companies, all of which plays an important role in the economy of Taiwan. The fire was first spotted at the third floor of Tower A around 4:01 am. Because of the large floor area and the high temperatures inside the enclosed area, the fire had spread to distant places in a short 30 minutes - by 4:30 am fire were spotted on the 5th floor and by 7:00 pm the same day, the 10th floor too caught fire. And most unexpectedly, by 10:30 pm an explosion blasted from the 16th floor and an even bigger fire began to burn its way to the top two floors, 25th/F and 26th/F, and across to the adjacent Tower B and C. The fire lasted at a haunting length of 42 hours, burning everything in its way, including most of MAA Group's Taiwan branch office.

Located on the 22nd floor, it is unfortunate that the fire has also burned down MAA Taiwan's main office, burning almost everything in the office and destroying 25 plus years of invaluable engineering data, information, and library. Such great loss is unspeakable. However, with the high morale, experiences, knowledge, and hardwork of the 400 plus MAA employees, and with the great help of friends and clients all over Taiwan, 80% of the workforce were back in working mode on the follow-

ing Monday. And in a short 2 weeks period, MAA Taiwan has regrouped the 260 in-office employees at a new temporary office. Below is a short description of the emergency actions of MAA Taiwan.

MAA's Emergency Actions

In the short two weeks period, all MAA Taiwan staff has upheld the MAA Group motto ASSET (advanced technology, project safety, client's satisfaction, economical solution, and timely completion) as well as minimize any impacts on on-going projects.

Day 0: 12 May

The fire incident. Many employees, worried about the office, have rushed to the fire scene on the day of the incident. However, the fire was so large that broken window glasses, burning papers, and fire sparks flew out for long hours. The bad weather - rain showers and strong winds due to a typhoon that was brewing at southern Taiwan - have added to the eerie mood.

Day 1: 13 May

An emergency meeting was held at 8 am to discuss immediate actions.



Emergency meeting

1) Location: The decision was to organize places for the departments to report to on Monday. Under the help of friends, clients, construction site offices, and MAA staff, all of the departments were placed in 8 different areas, with the emergency headquarters placed at SURV - a newly founded architecture and urban planning company affiliated to MAA.

2) Communication: It was important to immediately establish communication channels to reach all of the departments. An internet webpage to post important contact information and news was established under the help of www.olemap.com. Contacts were made to the telephone company who under great help has immediately transferred our old office numbers to the SURV office.

3) Clients: Managers and Vice Presidents began to organize visits to key clients such as High Speed Rail and MRT to guarantee that any impacts to the projects will be kept to the minimal.

WEEK 1: 14 May to 18 May

1) Work force: 95% of the work force was in working mode by the middle of the week.



Recovery of data

2) Two model MAA Staff members: Two staff members have shown their exceptional bravery and behavior that deserved the utmost respect from all of MAA. They were at the office on the day of the fire see MAA's Past Announcements.



Library before and after the fire

3) Discovery and Recovery of unburnt materials: After the confirmation of putting out the fire, the complex was reopened to allow people to return to the damaged companies to rummage for materials. Engineers and staff members of MAA were organized over a period of several days to visit the place. On the first day of the visit, 15 May 2001, to our great surprise, the Finance and Accounting Department, Personnel Department, Laboratory, Drafting, and High Speed Rail Geotechnical Division were unharmed. Immediate actions were taken to send 20 or so helpers to recover all the data. Under the harsh conditions, many computer harddisks and boxes of documents were transferred via staircases from the 22nd floor. To an even greater surprise, of the many harddisks recovered, 95% of the information was unharmed. These information were the key to the quick recovery.

4) Sleepless Nights: Many employees especially the administration, finance, information center, and drafting staff members have slept little to reorganize the recovered materials. Without their exceptional help, the regrouping process would have been delayed greatly.



Temporary office

5) Locating a temporary place: With the help of many friends and clients, MAA Taiwan was offered with many places to regroup the 260 plus employees. The key issues of relocating the temporary place were: easy transportation, minimal construction needed, large spaces, and readily available utilities. By the end of the week, a decision was made to rent three floors of office space at Hone Shee Building. This was made possible with the help of the Chairman of Hone Shee Group.

6) Purchasing computers: With ACER's incredible help and coordination, MAA was able to repurchase computers at the fastest possible rate. By the end of the week, 70 computers were bought and used by the departments.

7) Clients: Communication and visits to clients continued to ensure minimal delays to ongoing projects.



Recovered computers

WEEK 2: 21 May to 25 May

1) Move in: Telephone lines, internet connection, network setup, temporary wooden tables, etc. were setup over the weekend of 20-21 May. A special appreciation should be noted here to the utility companies and the interior construction foreman for their sleepless nights to build the 120 wooden tables. By Tuesday, 22 May, three departments have moved into the new temporary office. By the end of the week, all of the departments have moved in.



New temporary office at Hone Shee Building

2) Information Center: The information center continued their exceptional hardwork over the week to ensure a usable computer networking system, purchase of computers, printers, and scanners. By the end of the week, 180 computers were ready for use.

WEEK 3: 28 May to 1 June

1) Official working date: On Monday, 28 May, MAA Taiwan has officially started work in the new temporary office location. The location is to be used for 6 months during which time MAA will search for a new office space.



A note by the President to all MAA Taiwan staff

2) No delays of salary: Salary for the month of May was not delayed.

3) Information Center: email systems was reestablished by the end of the week.

4) Appreciation notes: Great appreciations are made to countless of clients, friends, and supporters to MAA Group..

Aftermath

After the first week of regrouping the MAA staff, more tasks that require hardwork from all individuals began. The specific tasks are data recollection, establishing new management information systems, and relocating a new office space. Despite the many rebuilding processes, any

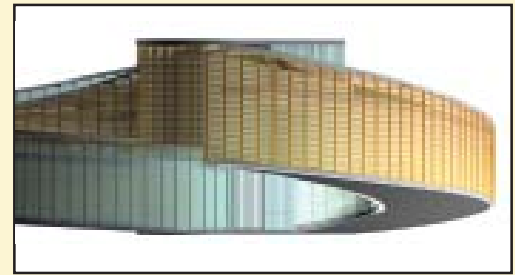
impacts on projects will be kept to the minimal. Quality of the projects will not be affected.



SURV OFFICE

SURV

11 May 2001 was the opening of SURV; an all-day open house was followed by the official reception from 6-8pm, topped off with a party at 10pm, in which the entire office was converted into a lounge complete with DJ's.



SURV PROJECT

Originally the design group of MAA Taipei, SURV is set up as a multi-disciplinary firm operating strategically in the realms of urban/architecture design, as well as in other design fields. The long term goal is the creation of an integrated network of professionals that can span the full scope of any one given project - from initial *pre-project* development consultancy stages to design processes of the actual project to *post-project* management, sales/leasing, etc..

The development of a clear design identity to compete in an ever-internationalizing world is the paramount priority of the new firm. Other than its own projects, SURV's mission includes supporting MAA's projects in all its design-related aspects.

ECOLS.COM Press Release



The Concept - E-consulting

E-consulting is an online Question and Answer Interface Platform where professional engineers answer all types of questions regarding civil and environmental engineering works. The platform serves as an educational, entertainment, and an additional communication channel to those who are concerned with the

potential natural hazard dangers, risks, and safety issues involved in his/her/their projects or homes.

The Story

In the past three years, the world has experienced enormous impacts of hi-technology and telecommunication developments on socio-economics, politics, and business systems. These developments include mobile phones and the internet, which have created additional communication channels that can reach any individuals at any time, place, and age.

Such developments are not only revolutionizing the way people behave, but are also revolutionizing the way businesses

are conducted. Businesses today are becoming more and more complex as business cycles shrink, changes become inevitable, competition is getting fiercer, and attitudes of employees, employers, and clients change. Businesses such as the traditional civil engineering industry must adapt into this changing world.

One adaptation is the use of the web medium as a communication channel to understand the needs of non-engineering professionals and layman, as well as an informational channel to provide educational information on natural hazard risks to homes and/or project developments. In particular, such method can be employed in the natural hazards prone island of Taiwan.

Taiwan is a country subject to major earthquakes such as 921 Chi-Chi Earthquake, heavy rainfalls, and typhoons, creating many life-threatening risks to people. In addition, poor ground qualities – fault lines, soft materials, and uneven land profiles - have increased the frequency of natural disasters such as floods and landslides. These disasters have not only limited sound developments in the numerous hill-lands surrounding the few flat land areas, but also limited rapid large-scale infrastructure developments. To minimize these risks and dangers, people responsible of developing their houses or blocks of land must undertake the responsibility to understand the complex behaviors of natural disasters and ground behaviors. However, many people lack the understanding of the importance and the complexity that lie behind such consultations.

In order to emphasize such needs, it is important to provide a channel for communication and education. As a result, Engineering Consulting On Line Services (ECOLS.com), published in June 2001, uses the web medium to achieve this need.

The website

The main purpose of the Engineering Consulting On Line Services (ECOLS.com) website is to provide an online platform where people can ask various engineering questions to help them better understand the potential risks involved in their projects or to learn about the safety and dangers in their area during hazards such as typhoons, earthquakes, and landslides. The website provides basic knowledge on how engineers carry out their projects, the risks they face, and the specific challenging issues engineers face in areas with poor ground qualities.

The website is designed to reach audi-

ences of both layman and non-engineering professionals such as Developers, Architects, Real Estates, and Contractors.

The website design is based upon four major factors:

Educational, Professional, International, Technological

The structural elements of ECOLS.com can be categorized into three channels:

- 1) Basic information regarding ECOLS.com
- 2) Main navigation bar separated into
 - E-consulting
 - Interactive tools

Basic civil engineering Information on other Asian countries

The Team

ECOLS.com is formulated under the collaboration of MAA Group Consulting Engineers and OLEMAP INC. to provide people with the understanding of the complexity and risks involved in engineering of the ground. The collaboration brings together the 26 years of professional engineering experiences of MAA Group throughout Asia and the remote sensing, geographic information system (GIS), global positioning system (GPS), and internet-technology based company, OLEMAP Inc.

OleMap is a new breed of Internet GIS technology company supplying the infrastructure and content pertinent to delivering Location Based Services to users sensitive to location related information. Capitalizing on the increasing needs of location sensitive information, OleMap enables businesses to incorporate functions of "location-awareness" and "location-sensitivity" into their front/back office applications, supply chains operations, field operations, and web offerings such as CRM applications. Founded in March 2000, OleMap is uniquely positioned to provide innovative products and services

to the location sensitive business communities by combining its deep experience in Geographic Information System and expertise in Internet and wireless location technologies. Led by the 2 founders, Dr. Chung-Tien Chin and Dr. Cheng-Hong Cho, who are experts in the field of GIS and Computer Science/data mining respectively, OleMap has solutions addressing different segments of the LBS value chain.

OLEMAP's motto is "**Stretch your imagination - Discover the power of location**"

ECOLS.com is officially published on 11 June 2001.



TAIWAN HIGH SPEED RAIL PROJECT

The Taiwan High Speed Rail (THSR) runs approximately 345 kilometers from Taipei in the north to Kaohsiung in the south. Taipei, the capital city, is the political, economical, and business center of the island, while Kaohsiung is the heavy industry center. With three-quarters of the island's population residing along this corridor and the continuing economic development of the island, the demand for an efficient north-south transportation has become of great significance. As a result, the Taiwan High Speed Rail was established to meet this demand and to encourage the overall economic growth of the island.

Construction of the THSR is divided into 12 sections with 10 stations, 1 workshop station, 2 maintenance bases, and 3 depots. MAA was awarded the detailed design or contractors independent check of 6 sections and 1 station. Below are brief introductions of the works awarded to MAA.



MAP OF THE 12 SECTIONS AND 10 STATIONS
OF TAIWAN HIGH SPEED RAIL

Project: CC220

Contractor: Daiho - Chiu Tai - Kou Kai (DCK) Joint Venture

Location: Chiupeii City, Hsinchu County (68K+540) to Bao San Village, Hsin Chu County (86K+320)

Scope of Services: Design of permanent works including 10 tunnels, 29 sections of cut and fill earthworks, viaduct and bridge structures, and soil and water conservation plan.

Project: CC260 and CC270

Contractor: Bilfinger+Berger (B+B) and Continental Engineering Corp. (CEC) Joint Venture

Location: Changhwa County (170K+400) to Yunlin County (207K+015); and Yunlin County (207K+015) to Chiayi County (249K+814)

Scope of Services: Contractor's Independent Checking Engineer (CICE) of all design works including 7 tunnels with one being the longest tunnel in the HSR project, viaduct and bridges, cut and fill earthworks, and major temporary works.

Project: CC291

Contractor: Evergreen – Shimizu Joint Venture

Location: Madou, Tainan County (284K+221) to Koejen, Tainan County (312K+734)

Scope of Services: Design of permanent works including viaduct and bridge structure, excavation and foundation design, permanent diversion works of road and drainage design, additional soil investigation, and core system interface coordination and design services.

Project: CC295

Contractor: Evergreen – Italian Thai – PEWC Joint Venture

Location: Koejen, Tainan County (312K+734) to Jenwu, Kaohsiung County (340K+058)

Scope of Services: Design of foundation of all permanent works and civil works including viaduct and bridge structures, permanent and temporary diversion of road and drainage systems, and temporary works.

Project: CC296

Contractor: Evergreen – Shimizu Joint Venture

Location: Kaohsiung, Kaohsiung County

Scope of Services: Design of permanent works including viaducts and structures, sub-station buildings, earthworks, drainage and road diversion works, and core system interface coordination and design services.

Project: Hsin Chu Station

Client: Artech International Design Limited

Location: Hsin Chu

Scope of Services: Project management, civil works designs including earthworks, road and parking lot design, storm water and sewerage disposal system designs. Hsinchu Station is an elevated station with 4 tracks, 2 side platforms, and 2 passthrough tracks at the center of the station. The station will be designed to provide connection to the future MRT station and function as an inter-modal transportation center to serve the greater Hsinchu Metropolitan area. Hsinchu HSR Station site has an area of 13.02 hectares and is located at the eastern part of Hsinchu District Development Site.

Project: D301

Contractor: Evergreen – Italian Thai – PEWC Joint Venture

Location: Chiao-Toe Workshop

Scope of Services: Design of all permanent and temporary works including final design – route alignment and final design – box culvert structure.

PROJECTS APRIL 2000 – SEPTEMBER 2000

For the period between April 2000 to September 2000, more than 150 new projects were commenced. 70 projects were civil/structural/geotechnical design projects including high speed rail, highways, industrial development, common duct, airport facility, pharmaceutical and chemical facilities. 99 projects were completed in this time period.

Core Pacific City Shopping Mall Award



Model of Core Pacific Shopping Mall-to be opened in October 2001

In December 2000, the owner, Core Pacific City Corporation, awarded MAA Taiwan for the timely completion and outstanding planning, design and construction supervision of the deep excavation of Core Pacific City Shopping Mall. The deep excavation, 31.7 meters, is the deepest excavation ever done in Taiwan. The Core Pacific City Shopping Mall occupies a site area of some 2.66 hectares in the new central business district in the eastern part of Taipei City. The mall has a complex structure with 13 stories above ground, and 7 stories below ground. MAA was commissioned by the developer in March 1997 as the geotechnical consultant to provide services on the planning and design of foundation construction. Major works included site investigation, geotechnical analyses, evaluation of foundation construction scheme and sequence, structure floatation analysis, and design of construction monitoring system.

Reconstruction of 921 Chi-Chi Earthquake Damaged Schools

The catastrophic 921 Chi Chi Earthquake that attacked central Taiwan in the morning of 21 September 1999 not only destroyed towns, bridges, and dams in areas surrounding the epicenter, but also damaged buildings many kilometers away. Numerous schools in Yunlin County, Chiayi County, Chiayi City, Tainan County, and Tainan City were seriously damaged and need immediate reconstruction to resume normal class schedule for students. Professional project management approaches are needed for proper and timely development and implementation of the reconstruction projects.

MAA Taiwan was engaged by the Ministry of Education to provide project management services for the reconstruction of 22 primary and junior high schools. A total of 571 classrooms with a combined floor area of 164,000 square meters will be built. In addition to civil works, the services include program developments, assistance in the selection of architects, design reviews, construction tender processes, contract management, and quality assurances. Because the projects are located in many different areas, three site offices were established to keep track of the project progresses. A web page was also launched to publicize the progress and news of the projects: www.home.kimo.com.tw/maa-cm/

Children's Park in Tainan, Taiwan

Where children play to learn and adults learn to play!

Tainan, the city in southern Taiwan rich in historical heritage, is planning to build a Children's Park at a site in downtown with

9 hectares of land area. This development, in conjunction with the development of the Municipal Park of 12 hectares of land area, will be the main urban renewal driving forces. The proposed Children's Park will include several museums that will hold various cultural, art, science, technology, and amusement related exhibitions. In addition, educational interactive programs will be designed to promote intellectual and creative stimulations for children. It will serve as the learning and discovery center for children, families, schools, and communities. Annual visitors to the park are forecasted to be over one million people.

MAA Taiwan was engaged by the Tainan Municipal Government to carry out the planning of the park and development of the urban renewal program for its surrounding area. The service also includes feasibility study and drafting private participation scheme for the project.

Proposed Developments for NTU

As part of the development program of the Nanyang Technological University (NTU) of Singapore, two (2) proposed buildings, namely the proposed Nanyang Technological Executive Center and the proposed Research Techno Plaza are planned to be developed in the Jurong Campus where complicated geological formation and slope ground are found. MAA Singapore was engaged by the Project Architect and Engineer, M/s Indeco Consultants Pte. Ltd. on behalf of NTU to provide geotechnical consultancy services including soil investigation work with regard to the foundation system, earth retaining structures and slope stability of the proposed developments.

Proposed Tableting Facility for Schering Plough Ltd.

M/s Schering Plough Ltd., Singapore Branch is planning to develop a tableting facility at the western industrial area of Singapore. The proposed development, comprising a new 3-storey pharmaceutical manufacturing building with access roads, parking lots, and miscellaneous site structures such as pipe racks and guard houses, will be built on approximately 5.0 hectares site located on reclaimed land in close proximity to the western coast line at Tuas West Avenue where ground subsidence and erratic soil strata are the major concern in the foundation design.

MAA Singapore was engaged by the Engineer and Constructor, M/s Jacobs Lend Lease Pte. Ltd. on behalf of the client to provide geotechnical consultancy service to the project team including soil investigation work with regard to foundation system and site formation works of the proposed development. MAAS was also the geotechnical consultant for the Proposed Sterile Factory at Tuas West Drive for Schering Plough.

Proposed Singapore Management University

The Singapore Management University (SMU) of Singapore is planning to develop a new campus at Bras Basah within the central business district of Singapore. The proposed development, which occupied a land area of 7.76 hectares, is located over five land parcels where the existing National Library, Standord Road, Bras Basah Park, existing MRT Lines, and proposed Marina Lines are located. Complicated geological formation varying from very soft marine clay to very hard Bouldery Clay are found. MAA Singapore was engaged by the SMU to provide geotechnical consultancy services includ-

ing soil investigation work regarding the foundation and retaining systems of the proposed development.



Singapore Management University

Proposed Multiple-User Business Park Development

The Piling and Substructure Works Contract of the Proposed Multiple-User Business Park Development to be developed by the Jurong Town Corporation (JTC) at Changi Business Park Central 1/Changi Business Park Avenue 1, Singapore was awarded to M/s Seatwon Construction Pte. Ltd. in March 2000. Works involved in this Contract consist of the installation of tension and compression bored piles up to an ultimate compression capacity of 3000 tons and the excavation within a circular basement area (i.e. 169 meters in diameter) surrounded by a short permanent diaphragm wall design. Conventional retaining method, i.e. internal bracing was found not to be a practical solution for this restricted site condition. MAA Singapore was engaged by the Main Contractor to provide professional services

consisting of i) design of piles, ii) pile eccentricity analysis, and iii) design of "Ring Beam-Diaphragm Wall" system using cylindrical thin-wall theory for maintaining the stability of excavation to be carried out close to or partially beyond the toe level of diaphragm wall for the proposed project.

Proposed Construction of Queensway/Commonwealth Avenue Interchange

The Land Transport Authority (LTA) of Singapore has awarded a contract for Accredited Checker to the Proposed Construction of Queensway/Commonwealth Avenue Interchange in May 2000 to M/s Indeco Consultants Pte. Ltd. on the basis of the technical support on highway bridge/deep excavation analysis provided by MAA Singapore to the AC firm. The proposed interchange consists of depressed carriageway, twice-cell underpass with water storage chamber, deep pump sump, contiguous bored pile walls, electrical sub-station and pedestrian overhead bridges to be constructed along Queensway in close proximity to the existing housing and MRT viaducts. MAA was responsible for the accredited check for the design of the proposed depressed carriageway, underpass, pump sump, contiguous bored pile walls and foundation bored piles.

Big-C Bang Na Superstore

In addition to two recently completed superstores in Hat Yai and Hua Mark and two ongoing projects in Fashion Island and Don Muang, Big-C Supercenter Co., Ltd. (Public), one of the leading hypermarket chains in Thailand, has awarded the construction management contract to MAA Consultants Co. as the fifth contract within two years for its new branch on Bang Na-Trad Highway near Samutprakarn province in March 2001.

Big-C Bang Na Superstore consists of a three-story building with single level of basement. The total floor area is 60,000 sq. m. with ground and 2nd level as shopping and retail area while the basement and 3rd floor to be parking zone. Total construction cost is expected to be over 500 million Baht (about US\$ 12 million). Due to high competition among superstores in the region, the Big-C Bang Na is required to be completed within 9 months to meet the opening schedule in January 2002.

PROFESSIONAL ACTIVITIES

International Visits

Dr. Za-Lee Moh was invited by President Chen Shui-Bian of R.O.C. to join his state visit of six countries. The countries visited include: Dominican Republic, Nicaragua, and Costa Rica in Central America; and Gambia, Borkina Fasso, and Chad in Africa. The presidential party left Taiwan on 13 August 2000 and returned on 25 August 2000.

Dr. Za-Chieh Moh Honored

At the opening ceremony of the 10th Conference of the Road Engineering Association of Asia and Australasia held in Tokyo on 4 September 2000, Dr. Za-Chieh Moh was honored by being elected as the 11th Honorary Member of the Association. Dr. Moh, one of the longest serving council members for 26 years, and the Honorary Treasurer-General for the last 14 years, decided not to stand for re-election for the eleventh council term. During the past 26 years, Dr. Moh has served as Vice Chairman of the Organizing Committee for the 1st and 4th Conference of the Association and Secretary General of the Organizing Committee of the 3rd Conference.

MEETINGS

REAAA

From 4th to 7th September 2000, Dr. Za-Chieh Moh and Mr. Richard T.F. Song, Senior Vice President of MAA Taiwan attended the 10th Conference of the Road Engineering Association of Asia and Australasia in Tokyo, Japan. Dr. Moh was invited to serve as Chairman for two technical sessions.

In addition, Dr. Moh also attended the Steering Committee Meeting, the 67th Council Meeting and the Tenth General

Meeting of the REAAA in his capacity as the Honorary Treasurer-General of the Association.

FIDIC

The 2000 FIDIC Annual Conference was held in Honolulu, Hawaii, USA from 11th to 13th September. On behalf of the Chinese Association of Engineering Consultants, Taipei, Dr. Za-Chieh Moh, Vice President of CAEC led a delegation that included Mr. John Yu, President of CTCI; Mr. K.C. Liu, Chairman of Pacific Engineers & Constructors Ltd.; Mr. Dah-Yung Hsieh and Mr. Yen-Po Chen, Senior Vice Presidents of CECEI; Mr. Chi-Shou Hsieh, President of Sinotech; Mr. Robert Hsiao, Vice President of CTCI; and Mr. I. K. Yang, Secretary-General of CAEC. A very cordial get together dinner with over 60 delegates of the Chinese National Association of Engineering Consultants led by President Mr. She Jianming was held on 12th September to celebrate the Chinese Mid-Autumn Moon Festival.

Tempisque, Costa Rica

Dr. Za-Chieh Moh visited Costa Rica from 11th to 15th November 2000. MAA is the designer for the Tempisque Bridge as well as the 38 kilometers long mountainous San Carlos Highway (see MAA Bulletin Issue No. 30-31). The purpose of the visit was to discuss the two projects with H.E. Dr. K.W. Mao, Ambassador to Costa Rica and other embassy officers. A presentation of the preliminary design of the highway was made to HE Migued Rodrigues, President of Costa Rica. A site visit to the Tempisque Bridge was also made with Dr. and Mrs. Mao and many senior embassy officers and their spouse.

GEOTECH 2000

The Geotech 2000 was held in Bangkok from 27th to 30th November 2000, under the sponsorship of Asian Institute of Technology and the Southeast Asian Geotechnical Society. Dr. Za-Chieh Moh, Dr. Richard N. Hwang, Mr. Duann Shaw-Wei, and Mr. Jan-Jia-Bin attended the conference.

MAA Holding

The MAA Consultants Holding Co., the holding company of MAA Group companies, held its 38th Board of Management meeting in Beijing on 2nd & 3rd November 2000. This is the first time that MAA Holding has its Board meeting held in China.



MAA Consultants Holding Ltd. 38th Board of Management meeting.

IYGEC (International Young Geotechnical Engineers Conference)

Geotechnical engineer Mr. Yung-Kang Yang represented Southeast Asia Region of the ISSMGE (International Society for Soil Mechanics and Geotechnical Engineering) to the first International Young Geotechnical Engineers Conference. The conference was held from 8 September 2000 to 13 September 2000 at the University of Southampton, United Kingdom. More than 100 delegates from over 50 countries participated the conference. Along with pre-

sentations by all delegates were keynote speeches delivered by distinguished professionals, including Dr. Kenji Ishihara, Dr. Robert Mair, Dr. Suzanne Lacasse, and Dr. Kerry Rowe. The organizer also arranged equally attractive activities such as a field trip, conference dinner, etc..

Asian Conference on Unsaturated Soils – Singapore

Dr. D. Q. Yang, Senior Geotechnical Engineer of MAA Singapore attended the Asian Conference on Unsaturated Soils in Singapore on 18th and 19th May 2000, and presented a paper on Water Flow in Un-

saturated Soil Slopes with Horizontal Drains. Dr. Yang was also the organizing committee member of the conference.

CONFERENCES, SEMINARS, and Other MEETINGS

SEMINAR DESCRIPTION	SPONSORSHIP	LOCATION	START DATE	END DATE
Seminar on the Use of Fly Ash in Concrete for Public Works	Public Construction Commission	Taipei	07/04/2000	07/04/2000
Conference on Geological Exploration Techniques of Tunnel Engineering	Taiwan Construction Research Institute	Taipei	13/04/2000	14/04/2000
Workshop on Design Manual and Expression for Tunnel Engineering	Chinese Taipei Tunnelling Association	Tainan	14/04/2000	14/04/2000
The Precast Segmental Method of Construction (Seminar on Technology of Bridge Engineering)	China Engineering Consultants, Inc.	Taipei	18/04/2000	18/04/2000
Manager Training Program for Design Companies	Industrial Development Bureau, Ministry of Economic Affairs	Taipei	19/04/2000	19/04/2000
Seminar on Practice of Claim Events and Contract Management	Taiwan Construction Research Institute	Hsintien Taipei County	24/04/2000	25/04/2000
Q.C. Engineering Training	China Productivity Center	Taichung	03/05/2000	03/05/2000
The 35th Discussion Meeting of the Sino-Geotechnics (Debris Flow)	Sino-Geotechnics Research & Development Foundation	Taipei	12/05/2000	12/05/2000
Workshop on Bridge Engineering -Bridge Monitoring Inspection and Management	National Central University	Chung-li	16/05/2000	16/05/2000
Asian Conference on Unsaturated Soils	Nangan Technological University	Singapore	18/05/2000	19/05/2000
Automatic Supervision Control and Network Technology Design for Central HVAC	Industrial Development Bureau, Ministry of Economic Affairs	Hsinchu	24/05/2000	25/05/2000
Seminar on Blasting Densification Method	China Engineering Consultants, Inc.	Taichung	05/06/2000	05/06/2000
Geology Field Trip and Engineering Site Visiting Along the Coast Road from Hualien to Taitung	Chinese Institute of Civil and Hydraulic Engineering	I-lan, Hualien	08/06/2000	09/06/2000
Conference on Floor and Risk Analysis	Sinotech Foundation for Research & Development of Engineering Sciences & Tehchnology	Taipei	13/06/2000	13/06/2000
Seminar on Rules and Regulations for Soils and Groundwater Pollution Remediation Act	Environmental Protection Administration	Taipei	15/06/2000	15/06/2000
Seminar on Network Applications for Slope Safety Monitoring Systems	Construction and Planning Admin., Ministry of Interior	Taipei	16/06/2000	16/06/2000
Seminar on Test of Hydraulic Engineering on 921 Chi-Chi Earthquake	Sinotech Engineering Consultants, Inc.	Taipei	20/06/2000	20/06/2000
Technology Symposium for Tunnel Engineering	Taiwan Construction Research Institute	Taipei	29/06/2000	29/06/2000
The 11th Hydraulic Engineering Conference	Hydrotech Research Institute, National Taiwan University	Taipei	05/07/2000	05/07/2000

SEMINAR DESCRIPTION	SPONSORSHIP	LOCATION	START DATE	END DATE
Discussion Meeting for Environmental Impact Assessment	Bureau of Environmental Protection, Taipei City Government	Taipei	06/07/2000	06/07/2000
TEPA-USEPA Bilateral Cooperation Program Workshop on Groundwater Pollution	TEPA, USEPA	Taipei	11/07/2000	12/07/2000
Airport System Planning Seminar	Institute of Transportation, MOTC	Taipei	17/07/2000	18/07/2000
Seismic Safety Evaluation and Damage Prevention in Harbor Engineering	Institute of Harbor and Marine Technology	Taipei	25/07/2000	26/07/2000
Seminar on Steel Structures Long-Term Protection Technique Against Corrosion	Taiwan Galvanizers Association	Taipei	26/07/2000	26/07/2000
Short Course on Construction and Supervision of Pile Foundations	Taiwan Construction Research Institute	Taipei	27/07/2000	28/07/2000
Workshop on Bridge Engineering(II)-Bridge Inspection, Monitoring and Management	National Central University	Taipei	01/08/2000	01/08/2000
Seminar on Cross-Strait Highway Construction, Building Seismic Design and Strength	Moh and Associates, Inc., Civil Engineering Technology Science Research and Development Foundation	Taipei	02/08/2000	02/08/2000
Recycling and Storage Earthwork Management of Construction Earthwork Material	Industrial Technology Research Institute	Taichung	09/08/2000	09/08/2000
Develop 2000	ORACLE	Taipei	09/08/2000	10/08/2000
Seminar on Durability and Practice of Concrete	Widening Construction Office, Taiwan Area National Freeway Bureau	Taipei	15/08/2000	15/08/2000
Second International Conference on Debris-Flow Hazards	Ministry of Education	Taipei	16/08/2000	18/08/2000
Short Courses for Treatment of Tunnel Lining Deterioration	Taiwan Construction Research Institute	Taipei	22/08/2000	22/08/2000
Workshop on Practical Bridge Corrosion Prevention	Taiwan Construction Research Institute	Taipei	22/08/2000	22/08/2000
Seminar on Construction and Internet Technology	Taiwan E-Construction	Taipei	23/08/2000	24/08/2000
Seminar on Kaohsiung Metropolitan Transportation System Planning and Development	Chinese Institute of Engineers, Kaohsiung Branch	Kaohsiung	25/08/2000	25/08/2000
The Relationship between Faults and the 921 Earthquake	Department of Rapid Transit System, Municipal Government Taipei	Taipei	25/08/2000	25/08/2000
The 5th National Conference on Structural Engineering	Chinese Society of Structural Engineering	Nantou	28/08/2000	30/08/2000
Training for Bridge Inspection, Evaluation and Maintenance	Institute of Transportation, MOTC	Taipei	28/08/2000	01/09/2000
Conference on Prevention of Soil Liquefaction and Methods of Improvement	Construction and Planning Admin., MOI	Taipei	06/09/2000	06/09/2000
Workshop on Seismic Resistant Evaluation and Strengthening for Elementary School	National Center for Research on Earthquake Engineering	Taipei	07/09/2000	08/09/2000
The International Young Geotechnical Engineers Conference	British Geotechnical Society	U.K.	07/09/2000	08/09/2000
Second International Workshop on Mitigation of Seismic Effects on Transportation	National Center for Research on Earthquake Engineering	Taipei	13/09/2000	14/09/2000
Engineer's Discussion on 921 Strong Earthquake	The Chinese Institute of Engineers	Taipei	16/09/2000	16/09/2000
International Workshop on Annual Commemoration of Chi-Chi Earthquake	National Center for Research on Earthquake Engineering	Taipei	18/09/2000	18/09/2000

SEMINAR DESCRIPTION	SPONSORSHIP	LOCATION	START DATE	END DATE
· Workshop on Durability Technology of Concrete Structures	Taiwan Construction Research Institute	Kaohsiung	19/09/2000	20/09/2000
· Workshop on Seismic Site Response Analysis	Taiwan Construction Research Institute & Taiwan Society of Geotechnical Engineering	Taipei	21/09/2000	21/09/2000
· Architecture Research Projects Seminars	Architecture & Building Research Institute, Ministry of Interior	Taipei	05/10/2000	06/10/2000
· Conference on Reservoir and Watershed Planning and Management	Department of Landscape Architecture, C.C.U.	Taichung	06/10/2000	07/10/2000
· International Conference on Rail Transportation for the New Century	Department of Transportation Management, Tamkang University	Tamshui Taipei County	21/10/2000	21/10/2000
· Discussion on Groundwater Pollution Prevention: Lecture on Remediation	Environmental Protection Administration	Taipei	23/10/2000	23/10/2000
· Conference of Industrial Safety & Health Technical Services	Industrial Development Bureau, Ministry of Economic Affairs	Taipei	24/10/2000	24/10/2000
· The Transfer of the Val Technology for the Taipei Rapid Transit System	Department of Rapid Transit Systems Taipei Municipal Government	Taipei	27/10/2000	27/10/2000
· Transit System Technology Symposium	Department of Rapid Transit Systems, Taipei Municipal Government	Taipei	27/10/2000	27/10/2000
· Geotech 2000	Asian Institute of Technology and Southeast Asian Geotechnical Society	Bangkok	27/11/2000	30/11/2000

TECHNICAL PUBLICATIONS

HWANG, R.N., WANG, F.G., CHENG, K. C., and CHEN, Y.K. (2000), "Ground Improvement for NATM Tunneling in Soft Ground," *Sino-Geotechnics*, No. 78, April, Taipei (Chinese).

WANG, G.S., TANG, D.C., HWANG, R.N.,

HU, I.C., and WANG, F.G. (2000), "Information System for the Safety of Construction of Rapid Transit Systems," *ISARC 2000, 17th IAAARC/CIB/IEEE/IFAC International Symposium on Automation and Robotics in Construction*, 18-20 September, Taipei, Taiwan.

YANG, D.Q., KONG, S.K., RAHARDJO, H., and LEONG, E.C. (2000), "Water Flow in Unsaturated Soil Slopes with Horizontal Drains," *The Asian Conference on Unsaturated Soils*, 18-19 May, Singapore, pp. 211-216.

PERSONNEL MOVEMENTS

NEW APPOINTMENTS

CHINESE NAME	ENGLISH NAME	DEPARTMENT	TITLE	EFFECTIVE DATE
· 許伯銓	Po-Chuan Hsu	High Speed Rail Project	Civil Engineer II	03/4/2000
· 黃浩志	Hao-Chih Huang	Transportation & Civil Engg. Dept. 1	Civil Engineer I	03/4/2000
· 林志佳	Chih-Chia Lin	The Second Freeway Nantou Section Construction Project	Civil Engineer II	05/4/2000
· 賴環鴻	Hwan-Horng Lay	The Second Freeway Nantou Section Construction Project	Civil Engineer III	05/4/2000
· 施仁章	Wen-Chang Shih	High Speed Rail Project	Civil Engineer I	10/4/2000
· 李尤揮	Yiu-Chuan Lee	Transportation & Civil Engg. Dept. 1	Civil Engineer II	17/4/2000
· 楊婷婷	Ting-Ting Yang	General Affairs, Administration Dept.	Clerical Assistant	17/4/2000
· 孫偉庭	Wei-Ting Sun	Construction Management Dept.	Senior Technician	17/4/2000
· 林弘哲	Hung-Che Lin	Transportation & Civil Engg. Dept. 1	Senior Technician	18/4/2000
· 李淑美	Shu-Mei Lee	Drafting Group, Information Center	CADD Operate	24/4/2000

CHINESE NAME	ENGLISH NAME	DEPARTMENT	TITLE	EFFECTIVE DATE
· 李 光 達	Kuang-Ta Lee	Geotechnical Engineering Dept.	Geotechnical Engineer II	25/4/2000
· 鍾 啓 泰	Chi-Tai Chung	High Speed Rail Project	Structural Engineer II	25/4/2000
· 劉 立 隆	Li-Ching Liu	High Speed Rail Project	Structural Engineer II	27/4/2000
· 張 穆 奎	Mu-Kuei Chang	High Speed Rail Project	Structural Engineer II	02/5/2000
· 張 芳 津	Fang-Ching Chang	High Speed Rail Project	Civil Engineer II	02/5/2000
· 蘇 津 和	Ching-He Su	Electric & Mechanical System Engineering Dept.	Senior Electrical Engineer II	02/5/2000
· 陳 裕 棟	Yu-Tung Chen	Electric & Mechanical System Engineering Dept.	Civil Engineer II	02/5/2000
· 吳 振 瑞	Chen-Jui Wu	The Second Freeway Nantou Section Construction Project	Civil Engineer II	02/5/2000
· 翁 繡 瓊	Shiu-Pei Weng	Personnel Group, Administration Dept.	Personnel clerk III	03/5/2000
· 許 燕 萍	Yen-Ping Hsu	Construction Management Dept.	Civil Engineer III	05/5/2000
· 黃 玉 慶	Yu-Feng Huang	Geotechnical Engineering Dept.	Geotechnical Engineer II	10/5/2000
· 劉 允 志	Yuh-Jyh Liu	Geotechnical Engineering Dept.	Geotechnical Engineer II	10/5/2000
· 范 書 日	Shu-Tian Fan	High Speed Rail Project	Structural Engineer II	15/5/2000
· 周 承 正	Ping-Cheng Chou	Environmental Protection Engineering Dept.	Environmental Engineer II	15/5/2000
· 賴 均 璋	Yun-Huei Lai	Construction Management Dept.	Civil Engineer II	15/5/2000
· 任 德 煜	Te-Yu Jen	High Speed Rail Project	Geotechnical Engineer II	22/5/2000
· 石 麟 麟	Chyi-Lin Shyr	Kaohsiung New Town Project	Senior Technician	01/6/2000
· 吳 基 政	Ji-Jeng Wu	Kaohsiung Office	Senior Technician	01/6/2000
· 郭 吉 富	Jyi-Fuh Guo	Construction Management Dept.	Senior Civil Engineer I	01/6/2000
· 黃 惠 玲	Huen-Ling Hwang	High Speed Rail Project	CAD Designer III	01/6/2000
· 溫 年 達	Nian-Tong Uen	Geotechnical Engineering Dept.	Geotechnical Engineer II	01/6/2000
· 蔡 耀 賢	Yaw-Shyan Tsay	Geomatics Dept.	Geotechnical information Engineer II	01/6/2000
· 林 楚 儂	Chuu-Ru Lin	High Speed Rail Project	Senior Civil Engineer II	01/6/2000
· 宋 煥 立	Huann-Wen Song	High Speed Rail Project	Geotechnical Engineer II	01/6/2000
· 張 博 森	Bor-Sen Chang	Construction Management Dept.	Civil Engineer II	01/6/2000
· 楊 柏 榮	Bor-Rong Yang	Construction Management Dept.	Civil Engineer II	01/6/2000
· 蔡 定 義	Ding-Yih Su	Geotechnical Engineering Dept.	Geotechnical Engineer II	07/6/2000
· 葉 晉 華	Jinn-Hwa Yeh	Kaohsiung Office	Civil Engineer III	12/6/2000
· 吳 宗 駿	Tzong-Jiunn Wu	Geotechnical Engineering Dept.	Geotechnical Engineer II	12/6/2000
· 沈 勤	Chyn Sheen	Geotechnical Engineering Dept.	Geotechnical Engineer II	12/6/2000
· 張 璿 貞	Yu-Jen Chang	Structural Engineering Dept.	Structural Engineer II	12/6/2000
· 陳 奉 洸	Yow-Ruu Chen	High Speed Rail Project	CADD Operator	16/6/2000
· 朱 怡 璋	Ke-Wei Chu	Geotechnical Engineering Dept.	Techincian I	19/6/2000
· 林 慈 貞	Tsyr-Jen Lin	General Affairs, Administration Dept.	Clerical Assistant	20/6/2000
· 何 立 元	Wen-Yuan Ho	Transportation & Civil Engg. Dept. 1	Technician I	26/6/2000
· 楊 頌 光	I-Kuang Yang	Business Development Dept.	Vice President and Manager of Business Development Department	01/7/2000
· 黃 立 泓	Wen-Hung Huang	High Speed Rail Project	Geotechnical Engineer II	03/7/2000
· 李 慧 菁	Huoy-Jing Lee	General Affairs, Administration Dept.	Trainee	03/7/2000
· 葉 建 益	Chien-Yi Yeh	Geotechnical Engineering Dept.	Geotechnical Engineer II	03/7/2000
· 劉 宏 光	Houn-Kung Liu	Geotechnical Engineering Dept.	Senior System Engineer II	03/7/2000
· 江 慶 良	Gwo-Liang Jiang	High Speed Rail Project	Geotechnical Engineer II	07/7/2000
· 周 世 銘	Shih-Ming Chou	High Speed Rail Project	Structural Engineer II	10/7/2000
· 謝 立 凱	Wen-Kai Hsieh	Transportation & Civil Engg. Dept. I	Civil Engineer II	17/7/2000
· 陳 逢 宇	Yi-Yu Chen	High Speed Rail Project	Structural Engineer II	17/7/2000
· 陳 俊 甲	Jiunn-Nan Chen	Dajia-Changben Supervision Office of Taiwan Central Second Freeway Project	Senior Technician	17/7/2000
· 蘇 宏 修	Hung-Hsiu Su	Geotechnical Engineering Dept.	Geotechnical Engineer II	18/7/2000

CHINESE NAME	ENGLISH NAME	DEPARTMENT	TITLE	EFFECTIVE DATE
· 劉 倉 豪	Tsang-Haur Liu	Structural Engineering Dept.	Structural Engineer II	24/7/2000
· 程 鼎 達	Ming-Dar Cherng	Transportation & Civil Engg. Dept. 1	Civil Engineer I	24/7/2000
· 楊 智 雄	Jyh-Shyong Yang	General Affairs, Administration Dept.	Messenger	24/7/2000
· 吳 寶 雅	Bao-Yea Wu	Geomatics Dept.	Geotechnical information Engineer II	25/7/2000
· 龐 弘 昌	Hornng-Chang Pang	Electric & Mechanical System Engineering Dept.	Civil Engineer I	01/8/2000
· 溫 思 明	Sze-Ming Wen	Geotechnical Engineering Dept.	Geotechnical Engineer II	01/8/2000
· 郭 俊 何	Jun-Her Guo	High Speed Rail Project	Geotechnical Engineer II	01/8/2000
· 林 碧 戀	Bih-Liann Lin	Drafting Group, Information Center	CADD Opertor	01/8/2000
· 郭 惠 吉	Huey-Jiun Guo	Information Center	Computer Operator	01/8/2000
· 鍾 偉 運	Wei-Chen Chung	Transportation & Civil Engg. Dept. II	Civil Engineer II	01/8/2000
· 鍾 梅 萍	Mei-Pyng Jong	Electric & Mechanical System Engineering Dept.	Technician I	16/8/2000
· 徐 鳳 峰	Kuo-Feng Hsu	Transportation & Civil Engg. Dept. II	Civil Engineer I	16/8/2000
· 林 怡 成	Yee-Chen Lin	Transportation & Civil Engg. Dept. II	Civil Engineer II	21/8/2000
· 許 澤 雅	Tzer-Eong Hsu	Information Center	Senior Programmer	21/8/2000
· 陳 薇 田	Wei-Hsu Chen	Development & Planning Dept.	Architect & Urban Planner	24/8/2000
· 林 燕 慧	Yen-Huoy Lin	Construction Management Dept.	Civil Engineer II	01/9/2000
· 曾 漢 湘	Hann-Shiang Tseng	Geotechnical Engineering Dept.	Geotechnical Engineer I	01/9/2000
· 李 雯 靜	Wen-Jing Lee	Construction Management Dept.	Senior Technician	01/9/2000
· 鄭 幸 美	Shing-Mei Jeng	Environmental Protection Engineering Dept.	Environmental Engineer II	01/9/2000
· 張 敏 宏	Min-Hung Chang	Dajia-Changben Supervision Office of Taiwan Central Second Freeway Project	Civil Engineer I	01/9/2000
· 黃 裕 華	Yu-Hung Chang	Geomatics Dept.	Geotechnical information Engineer II	04/9/2000
· 胡 柏 笙	Po-Sheng Hu	Geomatics Dept.	Geotechnical information Engineer II	04/9/2000
· 王 梅 菘	Yu-Chian Wang	Business Dept.	Secretary III	04/9/2000
· 潘 志 立	Chih-Wen Pan	Electric & Mechanical System Engineering Dept.	Civil Engineer II	18/9/2000
· 邵 鳳 士	Gwo-Shyh Shaw	High Speed Rail Project	Geotechnical Engineer II	19/9/2000
· 李 礎 柏	Wey-Bor Lee	High Speed Rail Project	Geotechnical Engineer II	20/9/2000
· 張 耀 宗	Yaw-Tzong Chang	Environmental Protection Engineering Dept.	Environmental Engineer II	25/9/2000
· 游 淑 蓉	Sue-Rong Yu	Accounting Group	Accountant III	29/9/2000
· 郭 蕙 萍	Huey-Ping Guo	Development & Planning Dept.	Planner II	29/9/2000
· 張 光 弘	Kuang-Hung Chang	Construction Management Dept.	Civil Engineer II	02/10/2000
· 楊 劍 鳴	Jian-Ming Yang	Construction Management Dept.	Civil Engineer II	02/10/2000
· 關 志 臣	Chih-Tomng Chiueh	Construction Management Dept.	Civil Engineer II	02/10/2000
· 徐 鳳 輝	Kuo-Hui Hsu	Geotechnical Engineering Dept.	Geotechnical Engineer II	11/10/2000
· 洪 鳳 隆	Grow-Long Hong	Dajia-Changben Supervision Office of Taiwan Central Second Freeway Project	Civil Engineer II	11/10/2000
· 廖 容 晨	Rong-Chern Liaw	General Affairs, Administration Dept.	General Affairs Clerk III	11/10/2000
· 余 麗 驊	Ching-Hwa Yu	Construction Management Dept.	Civil Engineer II	16/10/2000
· 廖 朝 木	Jau-Muh Liaw	Dajia-Changben Supervision Office of Taiwan Central Second Freeway Project	Civil Engineer II	16/10/2000
· 李 玉 麒	Yu-Chih Lee	Dajia-Changben Supervision Office of Taiwan Central Second Freeway Project	Senior Technician	2000/10/18
· 鄧 萍 嬌	Ping-Chiao Teng	High Speed Rail Project	Secretary III	2000/10/25
· 鄭 隆 印	Lung-Yin Jeng	General Affairs, Administraton Dept.	General Affairs Clerk II	2000/10/30
· 張 麗 輝	Lih-Chuan Chang	High Speed Rail Project	CADD Operator	2000/10/30

PERSONNEL PROFILES

EMBA Degree



In August 2000, Mr. Ben Pen-Chi LIN has successfully completed the EMBA course from the Asian Institute of Technology in Bangkok, Thailand. He is the first of the several MAA staff to have attended and completed the EMBA course. Mr. Lin has been a Senior Geotechnical Engineer in MAA Taiwan for over 5 years and is currently the Deputy Project Manager of the Airside Pavement Project for the New Bangkok International Airport. With over 18 years of experience, Mr. Lin has been involved in several major projects such as various residential and commercial buildings in California, Taipei Mass Rapid Transit Systems, Airport Planning in Southern International Airport & Kaohsiung International Port Overall Development Project, Taiwan High Speed Rail Project, B.T. Roadway Project in Vietnam, and Bangkok-Chonburi New Highway Project. Mr. Lin received his B. S. and M.S. degrees from Chung Yuan Christian University in 1981 and Utah State University in 1988, Respective's. He is a registered Civil Engineer of Utah, California and R.O.C., and is a member of American Society of Civil Engineers, Chinese Society Institute of Geotechnical Engineering, Taiwan Professional Civil Engineers Association, International Who's Who of Professionals, and Society of Professional Engineers of Thailand.

Mr. I-Kuang YANG



Mr. I-Kuang YANG, a notable civil engineer with over 20 years of experiences in the design and construction of roads, bridges, flooding prevention method, architecture, and landscape design planning, joined MAA in July 2000 as the Vice President and Manager of the newly formed Business Development Department of Moh and Associates, Inc.. Mr. Yang has received his bachelors degree from Feng Chia University in 1966 and a masters degree from the Department of Management Science of the National Chiao-Tung University in 1981. Mr. Yang has been involved in various major public construction works in Taiwan such as the design and construction supervision of Tseng-Wen Reservoir, Chi Zhiang, Hsin Hai, and Chuang Ching tunnels. In addition, he furthered his experiences in the academic realm as a Professor in Construction Management, Department of National Taipei University of Technology. He has been active in many engineering associations such as holding the Secretary-General position for the Chinese Association of Engineering Consultants in Taipei, and as the supervisor for the Urban Design Review Committee of the Taipei City Government. As the Vice-President and Manager of the Business Development Department, his main responsibilities include the analysis and carrying out various business strategic developments of MAA Taiwan.

Mr. Horn-Kuan LIU



Mr. Horn-Kuan LIU joined MAA Taiwan in July 2000 as a Senior Engineer in the Geomatics Department. Mr. Liu was a professional officer in the Combined Service Forces for 20 years. He was responsible for developing and promoting the automation of the accounting system and the payroll system, which is still being used by all the military units of the Chinese Armed Forces. He was promoted to Deputy Director, Accounting and Auditing Department with the rank of lieutenant colonel before he retired from Combined Service Forces in 1995. Subsequently to that, he worked for four years at a computer company and was involved in interesting projects such as computer simulation of war games, taxi dispatching system, noise monitoring and controlling for 5 airports, and on-line real time monitoring of traffic on freeways. He is well experienced in MIS, GIS, GPS, and PDA systems and is currently responsible for upgrading the MIS system and promoting GIS applications at MAA Taiwan.

Mr. Chi-Fu KUO



Mr. Chi-Fu KUO, with more than 25 years of experiences in various engineering works at the China Engineering Consultants, Inc. (CECI), joined MAA Taiwan in June 2000 as a Senior Civil Engineer I. Mr. Kuo Graduated from National Taiwan University. His major works include the publication of several research papers, acting Manager for the CKS International Airport Supervision Office, Deputy Manager of the Kee-His Section of the Second Freeway Supervision Office, Chief Engineer for Yang Min Sun Arch Bridge Supervision Office and many other architectural and civil engineering design and construction supervision experiences.

Mr. Chu-Zu LIN



Mr. Chu-Zu LIN received his B.S. degree from the National Taipei University in 1975 and M.S. from Oklahoma State University in 1984. He is a registered Environmental Engineer in Taiwan. Mr. Lin has over 20 years of civil engineering experiences and has undertaken considerable works in bridge planning and designing. Mr. Lin was a structural engineer in MAA from 1985 to 1987. Before rejoining MAA in June 2000, Mr. Lin has worked for Sinotech Engineering Consultants and China Engineering Consultants, Inc.. Currently Mr. Lin is carrying out major works for the High Speed Rail Project in MAA Taiwan.

Mr. Cheng-He SU



Mr. Cheng-He SU joined MAA Taiwan as a Senior Electrical Engineer II in May 2000. Mr. Su received the diploma degree from the Air Conditioning & Refrigerating Section of the Electrical Engineering Department of National Taipei Institute of Technology in 1975. With over 25 years of experiences as an electrical engineer, Mr. Sun has developed strengths in manufacturing and commissioning switch gear cubicle, panelboard, and motor control centers; planning and designing for electrical power, lighting and control systems; and installation and commissioning of Lithoplus Coating (LPC) & Ultraviolet Curing systems. His experiences include electrical power, lighting and control systems for factories, office buildings, schools, and hotels. Some specific examples include electrical quantity surveying for Marina Square in Singapore, electrical works for Central United Office Building of Executive Yuen Phases I & II, Fubon Banking Center in Taipei, and Lithoplus Coating System Installation for Shanghai Fan Yin Leefung-Asco Printing & Packing Co., Ltd..



MAA Group Consulting Engineers
亞新工程顧問(集團)公司

www.maa.com.tw

MAA ENGINEERING CONSULTANTS INTERNATIONAL LTD.

Room 2706-2707, 27/FI.
113-115 Argyle Street, Mongkok
Kowloon, Hong Kong, SAR China
tel : (852)2527-0747
fax : (852)2861-2081
e-mail : maahk@netvigator.com

MOH AND ASSOCIATES INC.

1st - 3rd Fl., No. 63, Ren-Ai Road, Section 2
Taipei 100, Taiwan, R.O.C.
tel : (886-2)2696-7888
fax : (886-2)2696-8688
e-mail : maagroup@maa.com.tw

MAA ENGINEERING CONSULTANTS (H.K.) LTD.

Room 2706-2707, 27/F
113-115 Argyle Street, Mongkok
Kowloon, Hong Kong, SAR China
tel : (852)2527-0747
fax : (852)2861-2081
e-mail : maahk@netvigator.com

MOH AND ASSOCIATES (S) PTE. LTD.

#04-09 Golden Mile Complex
5001 Beach Road
Singapore 199588
tel : (65)295-0611, 296-0533
fax : (65)298-7653
e-mail : maaspl@singnet.com.sg

MOH AND ASSOCIATES (M) SDN. BHD.

64-A Jalan Sri Bahari
10050 Penang, Malaysia
tel : (60-4)263-2793
fax : (60-4)263-5020
e-mail: maam@tm.net.my

MAA CONSULTANTS CO., LTD.

5th Fl., Technic Building
48 Soi Lertpanya, Sri Ayudthaya Road
Tanon Phayathai, Rachatawee
Bangkok 10400, Thailand
tel : (66-2)247-6968
fax : (66-2)247-6969
e-mail : maath@loxinfo.co.th

MAA GEOTECHNICS CO., LTD.

39/165-7, Moo 13, Lat Phrao Road
Lat Phrao, Bangkok 10230, Thailand
tel : (66-2)931-0721-3
fax : (66-2)931-0724
E-mail: maag@ksc.th.com

CABR-MAA INTERNATIONAL ENGINEERING CONSULTANTS LTD.

Room 368, No. B Building Jin Ru Commercial Plaza
No. 13, Eastern Beiyangfang Fu Wai Street
Beijing 100037, China
tel : (86-10)6836-3461
fax : (86-10)6836-3460
E-mail : cabrmaa@public2.bta.net.cn

MAA ENGINEERING CONSULTANTS (SHANGHAI) CO., LTD.

3/F, No. 858, Pan Yu Road
Shanghai 200030, China
tel : (86-21)6283-2069, 6283-2070
fax : (86-21)6283-1988
e-mail : maashcod@public.sta.net.cn

MAA ENGINEERING CONSULTANTS, INC.

1405 San Marino Ave., Suite 107
San Marino, CA 91108, U.S.A.
tel : (1-626)793-0008
fax : (1-626)793-5018
e-mail : maa_eng@pacificnet.net